

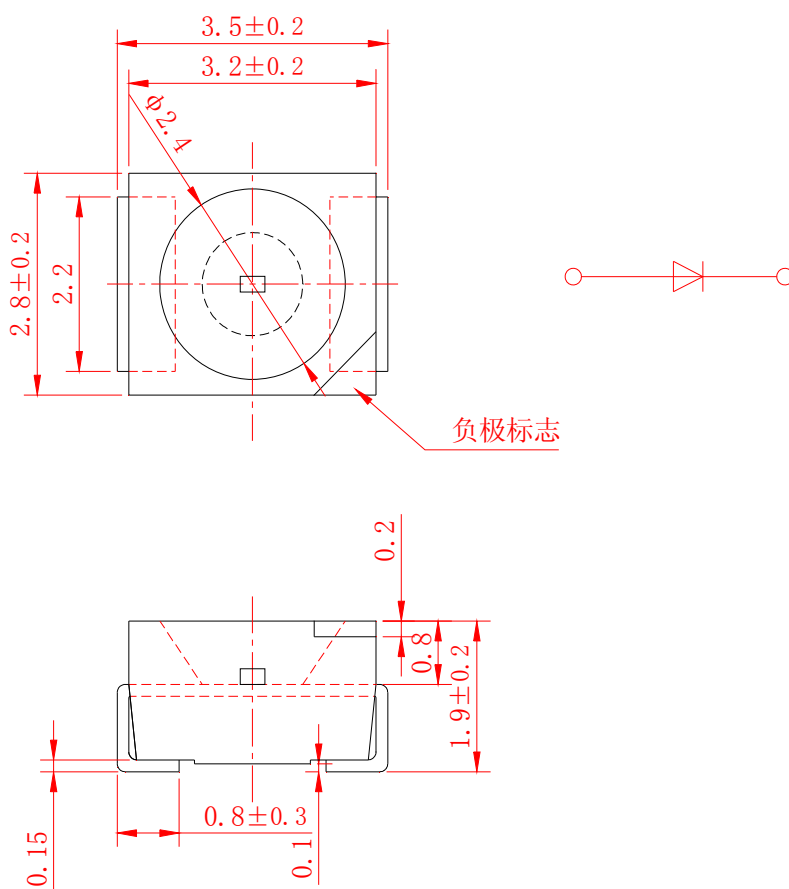


Part No.:CY-D3528IT19C

Page: 1 of 5

Description: TOP LED

Package Dimensions



Lens	Material	Emitting Color
Water Clear	InGaN	White

NOTES

- 1.All dimensions are in millimeters .
- 2.Tolerance is ± 0.1 mm unless otherwise noted.
- 3.Protruded resin under flange is 1.0mm max.
- 4.Lead spacing is measured where the leads emerge from the package.
- 5.Specifications are subject to change without notice.

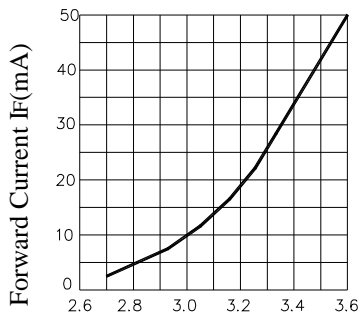
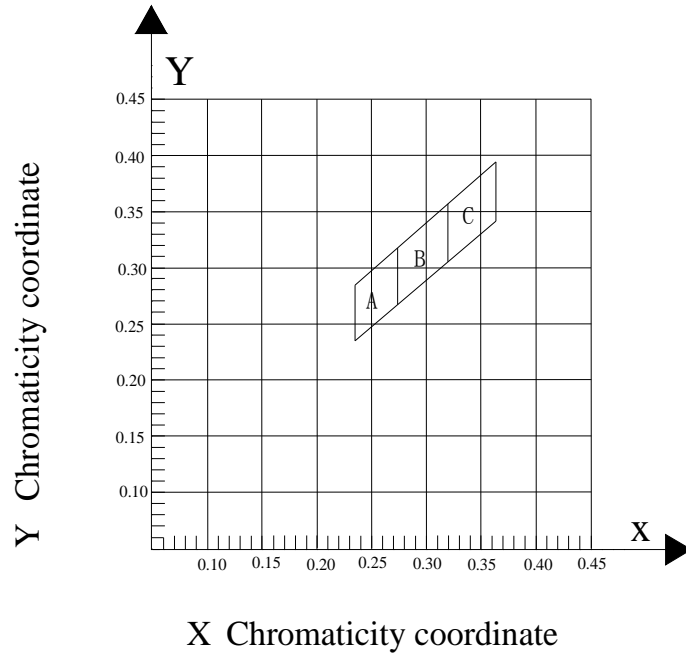
**Absolute Maximum Ratings at TA=25°C**

Parameter	Maximum Rating	Unit
Power Dissipation	120	mW
Peak Forward Current (1/10 Duty Cycle,0.1ms Pulse Width)	100	mA
DC Forward Current	25	mA
Reverse Voltage	5	V
Operating Temperature Range	-40°C to+85°C	
Storage Temperature Range	-40°C to+100°C	
Lead Soldering Temperature	260°C for 5 seconds	

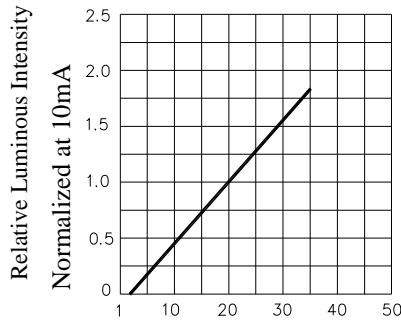
Electrical Optical Characteristics at TA=25°C

Parameter	Symbol	Min.	Typ.	Max.	Unit	Test Condition
Luminous Intensity	I _v	600	1100		mcd	IF=20mA
Viewing Angle	2 θ 1/2		110		deg	IF=20mA
Peak Emission Wavelength	λ _p			460	nm	IF=20mA
Chromaticity coordinate	X/Y	0.25/0.27	0.30/0.32	0.35/0.37		IF=20mA
Color temp			7000		K	IF=20mA
Spectral Line Half-Width	Δ λ				nm	IF=20mA
Forward Voltage	V _F	2.8	3.3	3.8	V	IF=20mA
Reverse Current	I _R			40	μ A	V _R =5V

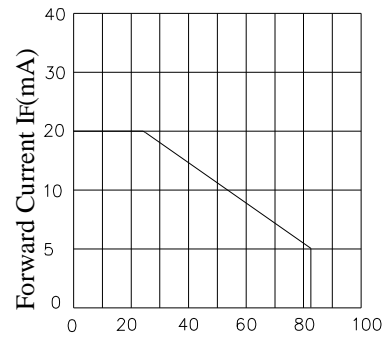
- Note:** 1.Luminous intensity is measured with a light sensor and filter combination that approximates CIE (Commission International Dd L Eclairage)eyeresponse curve.
2. θ 1/2 is the off-axis angle at which the luminous intensity is half the axial luminous intensity.
3. The dominant wavelength, λ_d is derived from the CIE chromaticity diagram and represents the single wavelength which defines the color of the device.
- 4.The I_v guarantee should be added ± 15%.



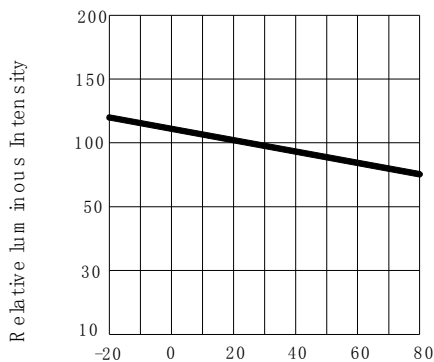
Forward Voltage VF(V)
Fig.2 Forward Current vs.
Forward Voltage



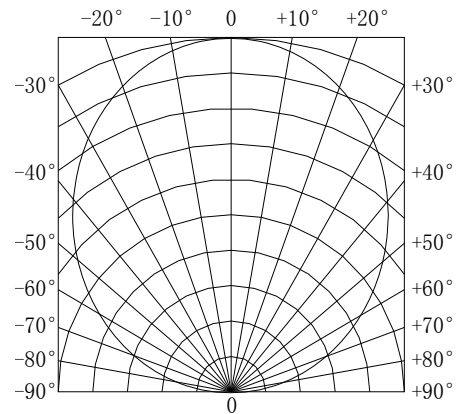
Forward Current(mA)
Fig.4 Relative Luminous Intensity
vs.Forward Current



Ambient Temperature TA(°C)
Fig.3 Forward Current
Derating Curve



Ambient Temperature TA(°C)
Fig.5 Luminous Intensity vs
Ambient Temperature



Emitted Angle 110°
Fig.6 Spatial Distribution



CAUTIONS

1.Application

The LEDs described here are intended to be used for ordinary electronic equipment (such as office equipment, communication equipment and household applications).Consult ChaoYi's Sales in advance for information on applications in which exceptional reliability is required, particularly when the failure or malfunction of the LEDs may directly jeopardize life or health(such as in aviation ,transportation, traffic control equipment, medical and life support systems and safety devices)

2.Storage

The storage ambient for the LEDs should not exceed 30°C temperature or 60% relative humidity.

It is recommended that LEDs out of their original packaging are used within three months.

For extended storage out of their original packaging,it is recommended that the LEDs be stored in a sealed container with appropriate desiccant or in desiccators with nitrogen ambient.

3. Cleaning

Use alcohol-based cleaning solvent such as isopropyl alcohol to clean the LEDs if necessary.

4.Lead Forming & Assembly

Do not use the base of the lead frame as a fulcrum during forming.

Lead forming must be done before soldering,at normal temperature.

During assembly on PCB, use minimum clinch force possible to avoid excessive mechanical stress.

5.Soldering

Do not apply any external stress to the lead frame during soldering while the LED is at high temperature.

Recommended soldering conditions:

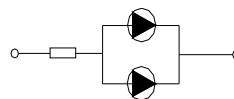
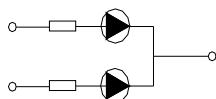
Soldering iron		Wave soldering	
Temperature	300°C Max	Pre-heat	180°C Max
Soldering time	3 sec.Max (one time only)	Pre-heat time	120sec.Max
		Solder wave	250°C Max
		Soldering time	10sec.Max

Note:Excessive soldering temperature and/or time might result in deformation of the LED lens or catastrophic failure of the LED.

6.Drive Method

An LED is a current-operated device,In order to ensure intensity uniformity on multiple LED: connected in parallel in an application,it is recommended that a current limiting resistor be incorporated in the drive circuit,in series with each LED as shown in Circuit A below.

Circuit model A



(A)Recommended circuit

(B)The brightness of each LED might appear different due to the differences in the I-V characteristics of those LEDs.

7.Protect Of ESD

Since the device is static sensitive,it is requested that anti-static measures should be taken on human body,all devices (including soldering iron) and equipment,machinery,desk and ground.



8. Reliability Test

Classification	Test Item	Ta=Under Room Temperature As	Sample Size	Ac/Re
Endurance Test	Operation Life	Per Data Sheet Maximum Rating *Test Time=1000HRS(-24HRS,+72HRS)	22PCS	0/1
	High Temperature Storage	Ta=100±5°C *Test Time=1000HRS(-24HRS,+72HRS)	22PCS	0/1
	Low Temperature Storage	Ta=-40±5°C *Test Time=1000HRS(-24HRS,+72HRS)	22PCS	0/1
Environmental Test	Temperature Cycling	85°C ~ 25°C ~ -40°C ~ 25°C 30mins 5mins 30mins 5mins 10Cycles	22PCS	0/1
	Thermal Shock	85°C±5°C ~ -40°C±5°C 10mins 10mins 10Cycles	22PCS	0/1
	Solder	T.sol=260°C±5°C Dwell Time=10±1secs	22PCS	0/1

9. Others

The appearance and specifications of the product may be modified for improvement, without prior notice.